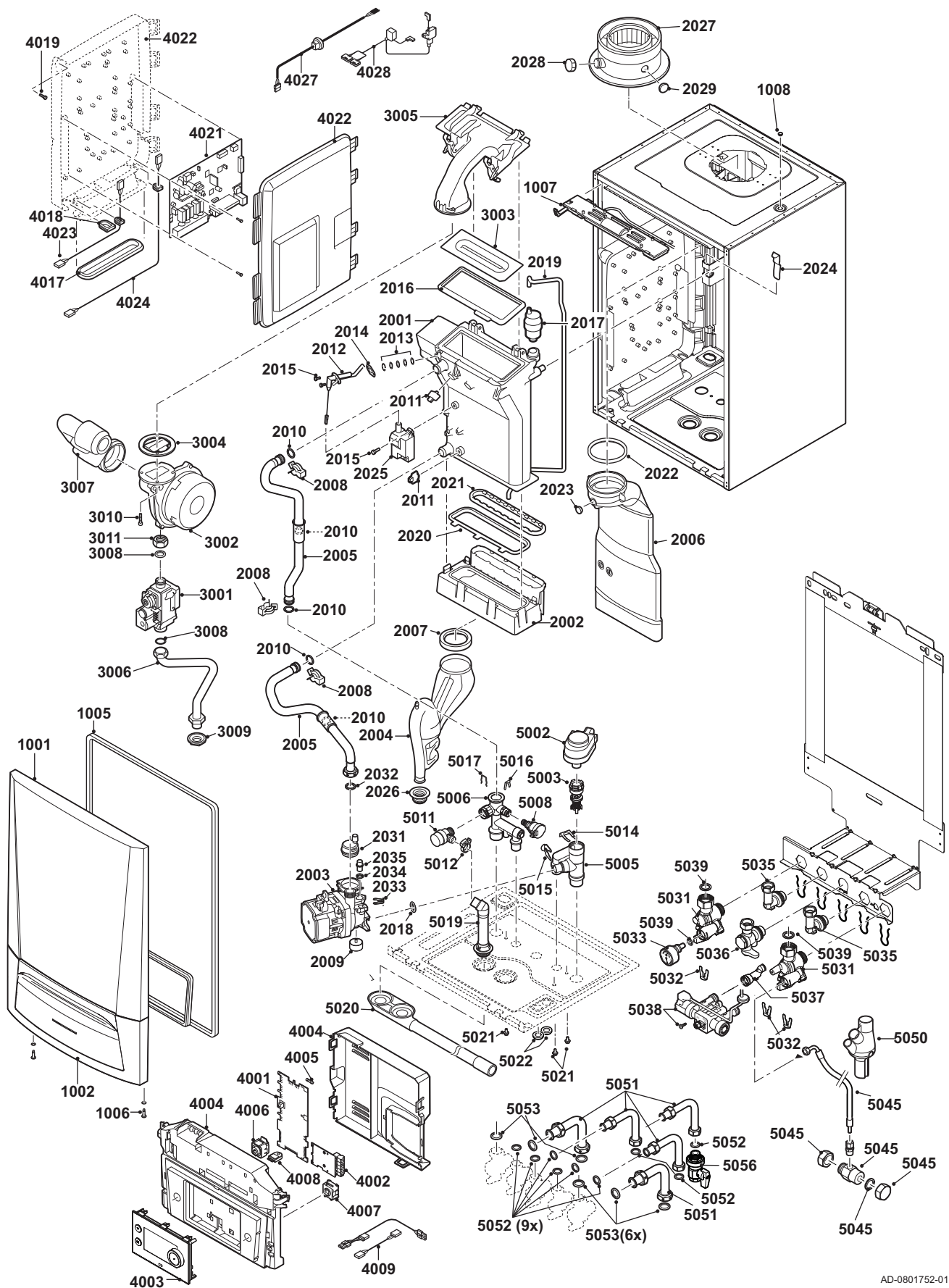


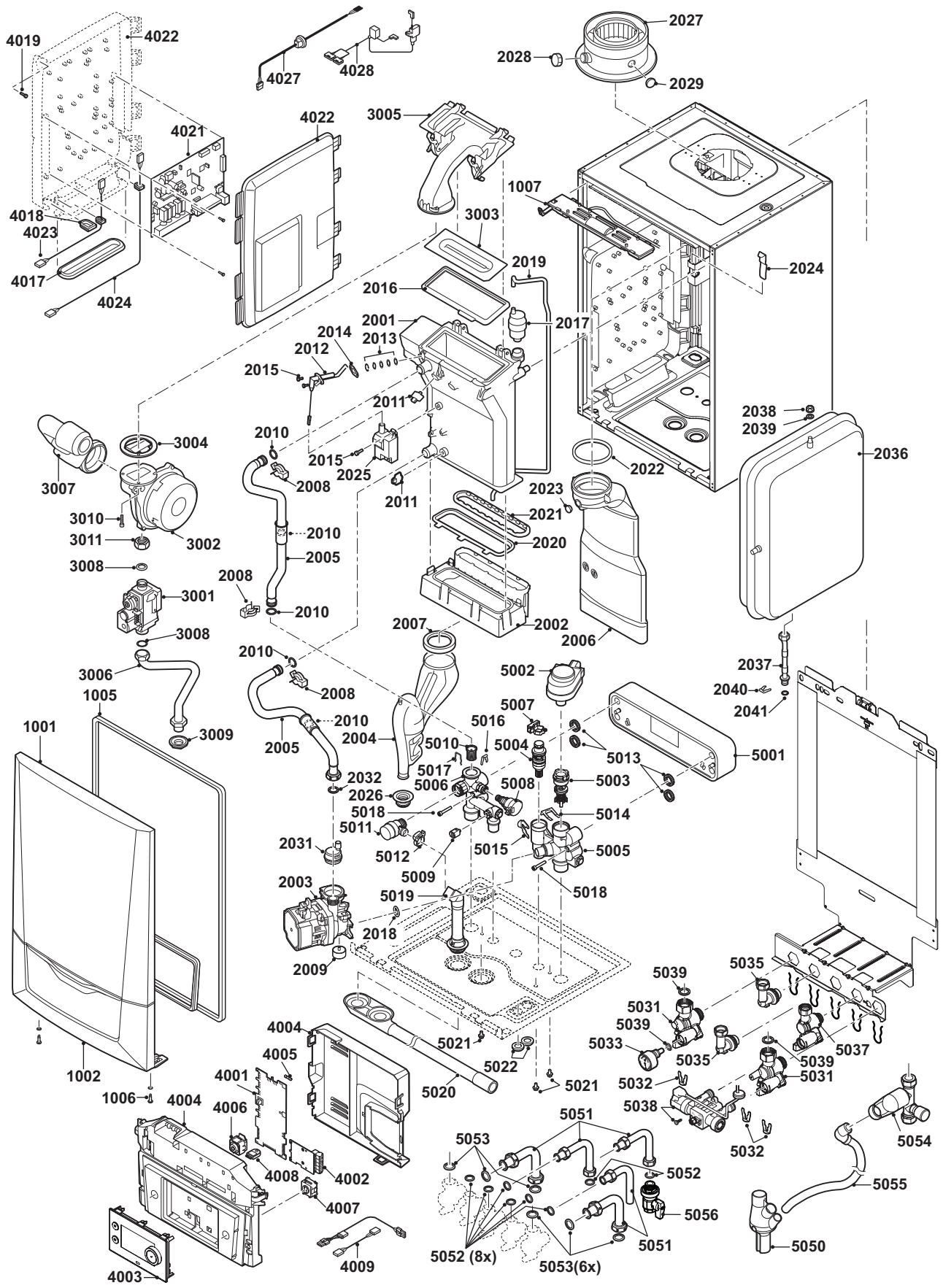
13.2 Pièces de rechange

Fig.113 Calenta Ace 15ds - 25ds



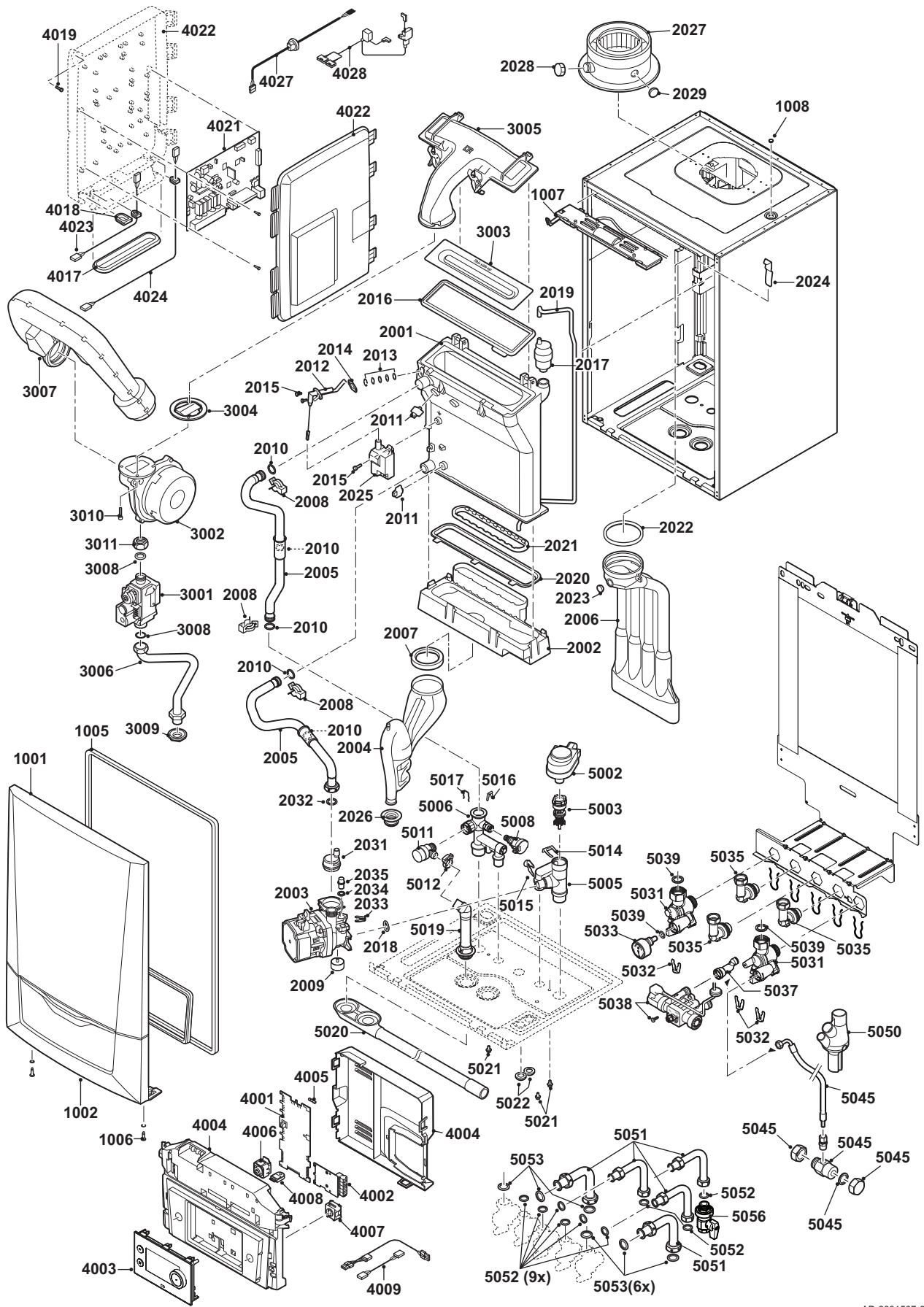
AD-0801752-01

Fig.114 Calenta Ace 25/28



AD-0801411-01

Fig.115 Calenta Ace 35ds



AD-0801507-01

13.3 Spare parts list

Tab.88 Casing

Markers	Code no.	Description	15ds	25ds	25/28	35ds	35/39
1001	7665188	Casing Front Panel	x	x	x	x	x
1001	7665189	Magnets	x	x	x	x	x
1002	7699351	Cover Drop Down	x	x	x	x	x
1005	7665192	Seal Cover Frame / HMI	x	x	x	x	x
1006	S101403	Stud Quarter Retainer	x	x	x	x	x
1007	S101253	Boiler Light	x	x	x	x	x

Tab.89 Heat exchanger and burner

Markers	Code no.	Description	15ds	25ds	25/28	35ds	35/39
2001	7689674	Heat Exchanger 28kW	x	x	x		
2001	7689714	Heat Exchanger 40 kW				x	x
2002	S100894	Condensate Collector 253 mm	x	x	x		x
2002	S101181	Condensate Collector 338 mm				x	
2003	7689675	Energy-efficient Pump	x	x	x	x	x
2003	7703779	Energy-efficient pump	x	x	x	x	
2004	S100905	Siphon Assembly	x	x	x	x	x
2005	7665244	Piping Set Flow and Return	x	x	x	x	x
2006	S100854	Flue Gas Exhaust Pipe Ø 80 (28 kW)	x	x	x		
2006	S101199	Flue Gas Exhaust Pipe Ø 80 (40 kW)				x	x
2007	S100906	Sealing Ring Siphon	x	x	x	x	x
2008	S59586	Hairpin Spring 18 mm (10 Pcs.)	x	x	x	x	x
2009	7689676	Vibration Silencer	x	x	x	x	x
2010	7673034	O-ring 18x2.8 MOS2 (10x)	x	x	x	x	x
2011	7623837	Sensors Set Double NTC 10K (1x) and NTC 10K(2x)	x	x	x	x	x
2012	S100890	Electrode Ignition/Ionisation	x	x	x	x	x
2013	S59118	Glass Inspection Set	x	x	x	x	x
2014	S62105	Gasket For Electrode (10 Pcs.)	x	x	x	x	x
2015	S48950	Screw M4 x 10 (50 Pcs.)	x	x	x	x	x
2016	S100880	Gasket For Burner 212 x 84 mm	x	x	x		x
2016	S101196	Gasket For Burner 40 kW				x	
2017	7669770	Air Vent	x	x	x	x	x
2018	S58730	O-Ring 17 x 4 (10 Pcs.)	x	x	x	x	x
2019	S100891	Hose silicone 8 x 4 x 715 mm	x	x	x	x	x
2020	S100888	Gasket Heat Exchanger-Condensate Collector	x	x	x		x
2020	S101179	Gasket Heat Exchanger-Condensate Collector				x	
2021	S100892	Gasket Flue Gas Discharge-Condensate Col	x	x	x	x	x
2022	S100855	Sealing Ring Ø 80 (5 Pcs.)	x	x	x	x	x
2023	S100850	Cap Measure Point Flue Gas Pipe	x	x	x	x	x
2024	S100901	Fixing Strip Heat Exchanger	x	x	x	x	x
2025	S100838	Transformer Ignition Incl. Electrode	x	x	x	x	x
2026	7665193	Grommet Siphon	x	x	x	x	x
2027	S100465	Flue Gas Discharge Adapter 80/125	x	x	x	x	x
2028	S62232	Screw Cap Flue Gas Measure Point (5 Pcs.)	x	x	x	x	x
2029	S62233	Plug For Air Inlet Measure Point (5 Pcs.)	x	x	x	x	x
2031	S100197	Airvent Pump	x	x	x	x	x
2032	S56155	Gasket 23.8 x 17.2 x 2 mm	x	x	x	x	x
2033	S100814	Clip 10.3 (5 Pcs.)	x	x	x	x	x
2034	S62586	O-Ring Ø 9.19 x 2.62 (10 Pcs.)	x	x	x	x	x

Markers	Code no.	Description	15ds	25ds	25/28	35ds	35/39
2035	S100242	Pump Plug	x	x		x	
2036	S100925	Expansion Vessel	x	x	x		x
2037	7702930	Pipe expansion vessel	x	x	x		x
2038	S44483	Nut M8 (10 Pcs.)	x	x	x		x
2039	S101007	Star Washer 8.2 (4 Pcs)	x	x	x		x

Tab.90 Gas/air

Markers	Code no.	Description	15ds	25ds	25/28	35ds	35/39
3001	S101507	Gas Combination Block with Throttle	x	x	x	x	x
3002	7665194	Fan Assembly 25-28 kW	x	x	x		
3002	7665247	Fan Assembly 35-40 kW				x	x
3002	7700058	Fan 10 kW	x	x			
3003	S100879	Burner 28 kW 198 mm	x	x	x		x
3003	S101524	Burner 40 kW 284 mm				x	
3004	S100881	Seal Ro. 83mm With Valve (28 kW)	x	x	x		x
3004	S101198	Seal Ro. 83 mm With Valve (40 kW)				x	
3005	S100882	Cover Gas/Air Chamber 220 x 84 mm	x	x	x		
3005	S101185	Cover Gas/Air Chamber 306 x 99 mm				x	x
3006	S100910	Gas supply Pipe	x	x	x	x	x
3007	S100911	Air Supply Damper	x	x	x		
3007	S101523	Air Supply Damper 40 kW				x	x
3009	S100806	Sanitary connecting Piece	x	x	x	x	x
3010	S100951	Screw 7985 M5 x 25 (10 Pcs.)	x	x	x	x	x
3011	S101010	Nut G3/4"	x	x	x	x	x

Tab.91 Electronic system

Markers	Code no.	Description	15ds	25ds	25/28	35ds	35/39
4001	7665195	PCB CU-GH08	x	x	x	x	x
4002	7665228	PCB CB-03	x	x	x	x	x
4004	7701984	Control Box	x	x	x	x	x
4005	7701771	Fuse Glass 2.5 Amp (5 Pcs.)	x	x	x	x	x
4006	7665230	Power Switch	x	x	x	x	x
4007	7665231	Service Connector	x	x	x	x	x
4008	7633327	Configuration Storage Unit CSU-01	x	x	x	x	x
4009	7665232	Cable Sensors	x	x	x	x	x
4009	7665234	Cable set (Controlbox intern)	x	x	x	x	x
4009	7689678	Pump cable (Energy-efficient Pump)	x	x	x	x	x
4009	S100842	Cable Three-Way-Valve	x	x	x	x	x
4017	S100869	Sealant Strip SCU	x	x	x	x	x
4018	S100862	Grommet 10 x 0 x 1.2 (5x)	x	x	x	x	x
4019	S14254	Screw 4.2 x 9.5 (20 Pcs.)	x	x	x	x	x
4021	7698588	PCB SCB-10 B (SW 1.0)	x	x	x	x	x
4022	S100860	Case SCU	x	x	x	x	x
4023	S100843	Cable SCU 230 V	x	x	x	x	x
4024	7690425	Cable Bus Interface	x	x	x	x	x
4027	S100839	Cable + Euroconnector (L = 1500 mm)	x	x	x	x	x
4028	7665233	Cable (Valve / Fan)	x	x	x	x	x

Tab.92 Hydraulics

Markers	Code no.	Description	15ds	25ds	25/28	35ds	35/39
5001	7665235	Plate Heat Exchanger 28 kW			x		
5001	7665250	Plate Heat Exchanger 40 kW					x
5002	7689679	Actuator Three-Way Valve	x	x	x	x	x
5003	7689680	Three-Way Valve	x	x	x	x	x
5004	7689681	Housing Cartridge + Sensor DHW			x		x
5005	7700076	Hydro Block Right DS Flat	x	x	x	x	
5005	7700078	Hydro Block Right C Flat 9L			x		
5005	7700079	Hydro Block Right					x
5006	7689711	Hydro Block Left Combi			x		x
5006	7700077	Hydro Block Left	x	x	x	x	
5007	7689700	Sensor DHW Flow			x		x
5008	S100821	Pressure Sensor	x	x	x	x	x
5009	7665238	Sensor NTC			x		x
5010	S100805	Filter System For Plate x Primary Flow			x		x
5011	S100829	Safety Pressure Relief Valve With Pipe	x	x	x	x	x
5012	S100873	Clip For Hose (5 Pcs.)	x	x	x	x	x
5013	S100810	C-Ring 25.2 x 17mm (20 Pcs.)			x		x
5014	S59135	Hairpin Spring 15.2 mm (10 Pcs.)	x	x	x	x	x
5015	S58731	Hairpin Spring Pump 18 mm (10 Pcs.)	x	x	x	x	x
5017	S100835	Hairpin Spring 16 mm (10 Pcs.)	x	x	x	x	x
5018	7689701	Screw CHC M5x30/22 8.8 ZN8			x		x
5019	S100866	Hose Of Safety Valve	x	x	x	x	x
5020	S101002	Condensate Drain	x	x	x	x	x
5021	7689702	Screw DIN6921 M5x10	x	x	x	x	x
5022	S62727	Grommet 20 mm (15 Pcs)	x	x	x	x	x
5031	7684680	Service Set Taps Flat	x	x	x	x	x
5032	S101740	Set with clips. nuts and screws	x	x	x	x	x
5033	S101763	Temperature/Pressure Gauge	x	x	x	x	x
5035	7660283	Elbow mounting frame	x	x	x		x
5035	7660285	Elbow mounting frame				x	
5036	S100872	Gas Cock	x	x	x	x	x
5037	7684678	Tap disconnecteur			x	x	x
5037	7684679	Connection piece disconnecteur	x	x		x	
5038	7673036	Automatic (re)fill unit	x	x	x	x	x
5039	7660289	Set O-Rings	x	x	x	x	x
5045	7700056	Set Additional Parts Disconnecteur	x	x		x	
5050	S100238	Condensate Collector	x	x	x	x	x
5051	7700842	Pipe Set 15/18	x	x		x	
5051	7700845	Pipe Set 15/15/18			x		x
5052	S56157	Gasket Ø 18.3 x 12.7 x2 mm (10 Pcs.)	x	x	x	x	x
5054	S59112	Safety Group 15 mm			x		x
5055	S101278	Hose Safety Group			x		x
5056	7700840	Gas Cock G1/2	x	x	x	x	x
0	7668122	Maintenance set A	x	x	x		x
0	7668123	Maintenance set B	x	x	x		x
0	7668124	Maintenance set C (C)			x		x
0	7668125	Maintenance set C (S/DS)	x	x			
0	7668126	Maintenance set A				x	
0	7668127	Maintenance set B				x	
0	7668129	Maintenance set C (S/DS)				x	